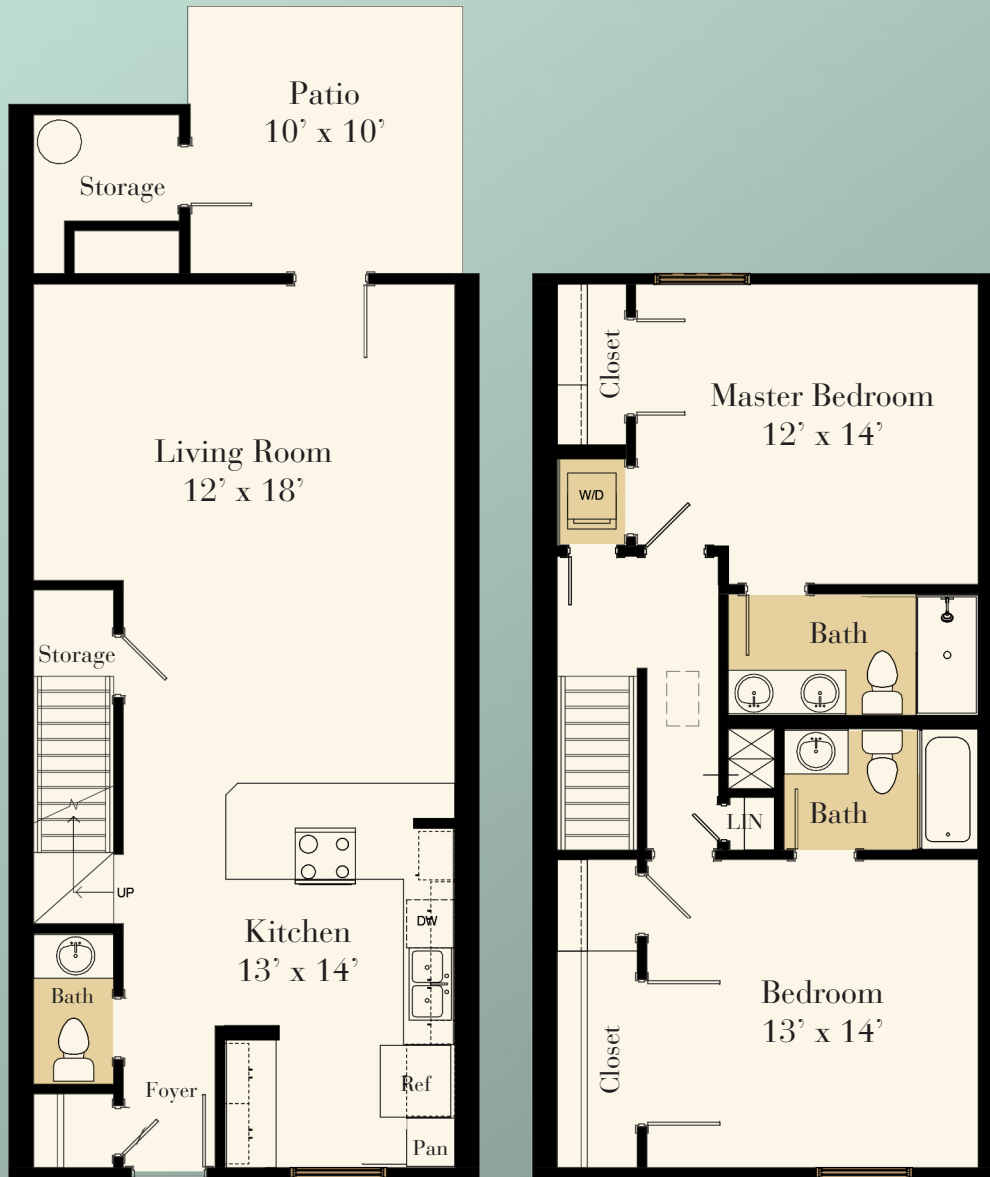


The Belmont is great for entertaining; featuring an open, well-appointed kitchen, expansive living area with direct access to a private patio/ deck, and two bedroom suites with private baths and spacious closets on the second level. This floor plan is situated adjacent to our shopping village, is located in a designated smoke-free building and includes a full-size, stackable washer / dryer.



**STRAWBERRY HILL**  
APARTMENT HOMES

4051 Bannockburn Place | Charlotte, North Carolina 28211  
704-366-1944 | [www.StrawberryHillApts.com](http://www.StrawberryHillApts.com)